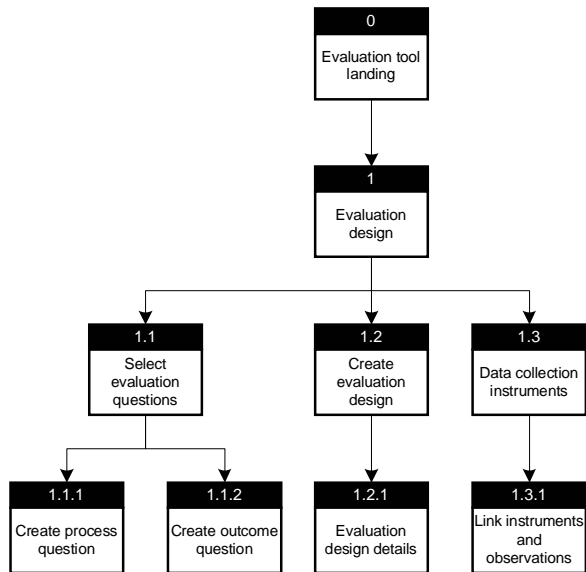


PrevTech Evaluation Tool
Site Hierarchy and Wireframes
5/11/04
Version 1.0

Tool Hierarchy



Document Revision History

- Version 1.0 - 5/11/04 - Initial Draft Document.
-

Prevention Technology Platform (PrevTech) - Microsoft Internet Explorer

File Edit View Favorites Tools Help

Address http://webdevgroup.orcmacro.com/gdoss/tool_redesign/evaluation/0.htm Go

SAMHSA/CSAP's PrevTech
Prevention Technology Platform

Project Setup | Training | Glossary | Library
Feedback | Help | Site Map | Search

Home Assessment Capacity Planning Implementation **Evaluation**

User:
Glen D.
[Logout](#) | [Profile](#)

[Reports](#)

Project:
DC Drunk Driving
Among Teenagers

Evaluation

1. **Evaluation design**

[View your Evaluation Report](#)

You're Here : Home >> Evaluation >> Evaluation Tool

Evaluation Tool

Current Project: **DC Drunk Driving Among Teenagers** Select Another Project


1. Evaluation design


- Select evaluation questions.
- Create an evaluation design.
- Select instruments to be used for each observation.

[View your evaluation report](#)

- View and print a report of the work you have done in this tool.

[Privacy Policy](#) | [Disclaimer](#) | [Link to Us](#)

 [Download a 508 accessible version of Adobe Acrobat Reader.](#)

 U.S. DEPARTMENT OF HEALTH & HUMAN SERVICES
Substance Abuse & Mental Health Services Administration
Center for Substance Abuse Prevention
www.samhsa.gov

Internet

Page ID: 0
Page Title: Evaluation Tool Landing

Page Details

1. The "View Your Work" section title has changed to "View your evaluation report". The old section (or work area) number has been removed from this link.

Prevention Technology Platform (PrevTech) - Microsoft Internet Explorer

File Edit View Favorites Tools Help

Address http://webdevgroup.orcmacro.com/gdoss/tool_redesign/evaluation/1b.htm Go

SAMHSA/CSAP's PrevTech
Prevention Technology Platform

Project Setup | Training | Glossary | Library
Feedback | Help | Site Map | Search

Home Assessment Capacity Planning Implementation **Evaluation**

User:
Glen D.
[Logout](#) | [Profile](#)

Reports

Project:
DC Drunk Driving
Among Teenagers

Evaluation

1. **Evaluation design**

[View your Evaluation Report](#)

You're Here : Home >> Evaluation >> Evaluation Tool

Evaluation Design

[My Clipboard](#)

Use this page to select process and outcome evaluation questions. Then create an evaluation design for your project.

Select Evaluation Questions

[Select/edit evaluation questions](#) 1

Type	Question
You have not selected questions yet	

Create an Evaluation Design

[Create/edit evaluation design](#) 2

Group Name	Type	Sample Size	Pre	During	Post
You have not created an evaluation design yet.					

Data Collection Instruments

[Select Instruments](#) (0 selected)

3

[Next >](#) 4

Done Internet

Page ID: 1
Page Title: Evaluation Design

Page Details

This screen shot represents what this page would look like when the user came to it for the first time.

1. This link takes the user to 1.1
2. This link takes the user to 1.2
3. This link takes the user to 1.3
4. Next takes the user to 0. The Next button is a standard form button with the style sheet class="bm" applied to it.

Prevention Technology Platform (PrevTech) - Microsoft Internet Explorer

File Edit View Favorites Tools Help

Address http://webdevgroup.orcmacro.com/gdoss/tool_redesign/evaluation/1.htm

Home Assessment Capacity Planning Implementation Evaluation

User: Glen D. [Logout](#) | [Profile](#)

[Reports](#)

Project: DC Drunk Driving Among Teenagers

Evaluation

1. **Evaluation design**

[View your Evaluation Report](#)

You're Here : Home >> Evaluation >> Evaluation Tool

Evaluation Design

[My Clipboard](#)

Use this page to select process and outcome evaluation questions. Then create an evaluation design for your project.

Select Evaluation Questions

[Select/edit evaluation questions](#)

Type	Question
Process: Fidelity 1	To what extent did people remember and like the program?
Process: Performance	What were the most pressing problems in operating the program and how can they be resolved in the future?
Outcome	To what extent did people remember and like the program?

Create an Evaluation Design

[Create/edit evaluation design](#) **2**

Group Name	Type	Sample Size	Pre	During	Post
Mrs. Smith's class	Intervention	20	1	1	1
Mrs. Smith's class	Control	18	1	1	1

Data Collection Instruments

[Select Instruments](#) (2 selected) **3**

[Next >](#) **4**

Done Internet

Page Details

This screen shot represents what this page would look like after the user has added evaluation questions, an evaluation design, and instruments.

1. Each Process question has a specific sub-type attached to it in the system (e.g. Fidelity and Performance). These sub-types are displayed in this table. Outcome questions currently have no sub-types.

2. Users are only able to add one Evaluation Design per project. Clicking on this link after a design has been added will allow them to edit their current design.

3. "(2 selected)" will display how many instrument the user has selected and transferred over from the M&IR. These instruments are displayed on 1.3.

4. Next will take the user to 0

Prevention Technology Platform (PrevTech) - Microsoft Internet Explorer

File Edit View Favorites Tools Help

Address http://webdevgroup.orcmacro.com/gdoss/tool_redesign/evaluation/1.1.htm Go

User:
Glen D.
[Logout](#) | [Profile](#)

[Reports](#)

Project:
DC Drunk Driving
Among Teenagers

Evaluation

1. [Evaluation design](#)

[View your Evaluation Report](#)

You're Here : Home >> Evaluation >> Evaluation Tool

Select Evaluation Questions

[My Clipboard](#)

Evaluation can answer many types of questions about your program - what you did, who you reached, and how effective you were. However, the more questions you try to answer, the more costly and complex the evaluation will be.

Review the questions listed below, and select the ones important to evaluating the final outcomes of the overall project. Take into account the expectations of funders, partners and stakeholders.

Select	Process Evaluation Questions
<input type="checkbox"/>	Did any events affect the implementation of the program (within the project management, the community, etc.)?
<input type="checkbox"/>	Did the number of participants in the program meet expectations?
<input type="checkbox"/>	How did members of the partnership/coalition feel about the program?
<input type="checkbox"/>	How did the participants feel about the program?
<input type="checkbox"/>	How did the staff feel about the program?
<input type="checkbox"/>	To what extent did people participate in the program?
<input checked="" type="checkbox"/> 1	To what extent did people remember and like the program?
<input type="checkbox"/>	Was the program developed as planned?
<input type="checkbox"/>	Was the program implemented as planned?
<input type="checkbox"/>	Were staff competent in conducting the program?
<input type="checkbox"/>	Were there any environmental influences (social, physical, legal, etc.) affecting the implementation of the program?
<input type="checkbox"/>	What did staff do to conduct the program?
<input type="checkbox"/>	What resources (fiscal, material, human) were required to do the program?

Internet

Page ID: 1.1
Page Title: Select Evaluation Questions

Page Details

Users can select as many questions as they want (or select none).

1. Questions that were previously selected are left checked when the user comes back to this page. They can remove the questions displayed on page 1, by unselecting the check boxes.

Prevention Technology Platform (PrevTech) - Microsoft Internet Explorer

File Edit View Favorites Tools Help

Address C:\gdoss\tool_redesign\evaluation\1.1.htm Go

What resources (fiscal, material, human) were required to do the program?
 What were the most pressing problems in operating the program and how can they be resolved in the future?
 What were the program outputs? (Such as activities held, materials distributed, counseling sessions held)
 [custom question 2](#) **1**

[Create your own process question](#) **2**

Outcome evaluations at this level may include monitoring the impact of the program in terms of your goals through changes in measures collected at baseline, especially indicators of the general substance abuse problem.

Select	Outcome Evaluation Questions
<input type="checkbox"/>	How did the costs compare to original plans or expectations?
<input type="checkbox"/>	How do the costs compare to those of other programs?
<input type="checkbox"/>	How effective was the program in changing knowledge, attitudes, and skills?
<input checked="" type="checkbox"/>	How effective was the program in changing risk or protective factors?
<input type="checkbox"/>	How effective was the program in producing long-term changes subsequent to the program's end?
<input type="checkbox"/>	How effective was the program in reducing or limiting substance abuse?
<input type="checkbox"/>	How much did it cost to run the program?
<input type="checkbox"/>	To what extent did people intend to apply the knowledge, attitudes, and skills?

[Create your own outcome question](#) **3**

[Next >](#) **4**

My Computer

Page Details

1. This is an example of a question the user added. This will work the same way it currently does. When a question is added it automatically is selected when a user returns to this screen.

2. This link will take the user to 1.1.1

3. This link will take the user to 1.1.2

4. Next will take the user to 1

Prevention Technology Platform (PrevTech) - Microsoft Internet Explorer

File Edit View Favorites Tools Help

Address http://webdevgroup.orcmacro.com/gdoss/tool_redesign/evaluation/1.1.1.htm?sect_id=1&topic_id=5&indv_proj_id=5379&CFID=160195&CFTOKEN=494914918 Go

SAMHSA/CSAP's PrevTech
Prevention Technology Platform

Project Setup | Training | Glossary | Library
Feedback | Help | Site Map | Search

Home Assessment Capacity Planning Implementation **Evaluation**

User: Glen D.
[Logout](#) | [Profile](#)

[Reports](#)

Project: DC Drunk Driving Among Teenagers

Evaluation

1. **Evaluation design**

[View your Evaluation Report](#)

You're Here : Home >> Evaluation >> Evaluation Tool

Create a Process Evaluation Question

[My Clipboard](#)

Evaluation Question*

Process Evaluation Type*

- Fidelity
- Level of Effort
- Level of Exposure
- Environmental Influences
- Performance
- Quality Assurance
- Resources
- Satisfaction
- Other

[Next >](#) **1**

[Privacy Policy](#) | [Disclaimer](#) | [Link to Us](#)

[Download a 508 accessible version of Adobe Acrobat Reader.](#)

U.S. DEPARTMENT OF HEALTH & HUMAN SERVICES
Substance Abuse & Mental Health Services Administration
Center for Substance Abuse Prevention
www.samhsa.gov

Done Internet

Page ID: 1.1.1
Page Title: Create a Process Evaluation Question

Page Details

Adding a question here will cause the question to be displayed and selected on 1.1. This page will operate the same way it currently does.

1. Next will take the user to 1.1

Prevention Technology Platform (PrevTech) - Microsoft Internet Explorer

File Edit View Favorites Tools Help

Address http://webdevgroup.orcmacro.com/gdoss/tool_redesign/evaluation/1.1.2.htm?sect_id=1&topic_id=5&indv_proj_id=5379&CFID=160195&CFTOKEN=49491491& Go

SAMHSA/CSAP's PrevTech
Prevention Technology Platform

Project Setup | Training | Glossary | Library
Feedback | Help | Site Map | Search

Home Assessment Capacity Planning Implementation **Evaluation**

User:
Glen D.
[Logout](#) | [Profile](#)

[Reports](#)

Project:
DC Drunk Driving
Among Teenagers

Evaluation

1. **Evaluation design**

[View your Evaluation Report](#)

You're Here : Home >> Evaluation >> Evaluation Tool

Create a Outcome Evaluation Question


[My Clipboard](#)

Evaluation Question*

[Next >](#) **1**

[Privacy Policy](#) | [Disclaimer](#) | [Link to Us](#)

 [Download a 508 accessible version of Adobe Acrobat Reader.](#)

 U.S. DEPARTMENT OF HEALTH & HUMAN SERVICES
Substance Abuse & Mental Health Services Administration
Center for Substance Abuse Prevention
www.samhsa.gov

Done Internet

Page ID: 1.1.2
Page Title: Create a Outcome Evaluation Question

Page Details

Adding a question here will cause the question to be displayed and selected on 1.1. This page will operate the same way it currently does.

1. Next will take the user to 1.1

Prevention Technology Platform (PrevTech) - Microsoft Internet Explorer

File Edit View Favorites Tools Help

Address http://webdevgroup.orcmacro.com/gdoss/tool_redesign/evaluation/1.2.htm

Home Assessment Capacity Planning Implementation Evaluation

User: Glen D. [Logout](#) | [Profile](#)

[Reports](#)

Project: DC Drunk Driving Among Teenagers

Evaluation

1. **Evaluation design**

[View your Evaluation Report](#)

You're Here : Home >> Evaluation >> Evaluation Tool

Create Evaluation Design

[My Clipboard](#)

Review the default drop down values below. If you choose to change these values, the Evaluation Design summary at the bottom of the page may change.

Will participants be randomly assigned to intervention and comparison/control groups?

Outcome Evaluation Design	Select the most accurate number
Number of intervention groups	<input type="text" value="1"/>
Number of comparison (or control) groups	<input type="text" value="2"/>
Number of main interventions (preventive)	<input type="text" value="1"/>
Number of boosters/follow-up intervention(s)	<input type="text" value="2"/>
Number of pre (or baseline) assessments (observations)	<input type="text" value="2"/>
Number of assessments (observations) during intervention	<input type="text" value="2"/>
Number of assessments (observations) post-intervention	<input type="text" value="1"/>

Evaluation Design Type: **Quasi-Experimental**

Your selections indicate all the necessary components for a robust quasi-experimental design for your outcomes evaluation. The basic design is presented in the table below.

Type of Group	Groups	Random Assignment?	Main Interventions	Boosters/Follow-up Interventions	Pre (Baseline) Assessments	Assessments During Intervention	Assessments Post-Intervention
Intervention/Preventive							

[Next >](#)

Done Internet

Page ID: 1.2
Page Title: Create Evaluation Design

Page Details

This page will function the same way it currently does. The only changes to this page involve removing some of the unnecessary text and old hierarchy from the top.

- Next will take the user to 1.2.1

Prevention Technology Platform (PrevTech) - Microsoft Internet Explorer

File Edit View Favorites Tools Help

Address http://webdevgroup.orcmacro.com/gdoss/tool_redesign/evaluation/1.2.1.htm?Submit=Next+%3E Go

SAMHSA/CSAP's PrevTech
Prevention Technology Platform

Project Setup | Training | Glossary | Library
Feedback | Help | Site Map | Search

Home Assessment Capacity Planning Implementation **Evaluation**

User:
Glen D.
[Logout](#) | [Profile](#)

[Reports](#)

Project:
DC Drunk Driving
Among Teenagers

Evaluation

1. **Evaluation design**

[View your Evaluation Report](#)

You're Here : Home >> Evaluation >> Evaluation Tool

Evaluation Design Details

[My Clipboard](#)

To finalize your Evaluation Design, provide the necessary information in the text boxes:

Evaluation Design Type: **Quasi-Experimental** ?

Intervention Group		
Group Name ?	Group Description and Sampling Information ?	Sample Size ?
<input type="text" value="Mrs. Smiths Class 1"/>	<input type="text"/>	<input type="text" value="20"/>

Control Group		
Group Name ?	Group Description and Sampling Information ?	Sample Size ?
<input type="text" value="Mrs. Smiths Class 2"/>	<input type="text"/>	<input type="text" value="20"/>

[Next >](#) **1**

Done Internet

Page ID: 1.2.1
Page Title: Evaluation Design Details

Page Details

1. Next will take the user to 1

Prevention Technology Platform (PrevTech) - Microsoft Internet Explorer

File Edit View Favorites Tools Help

Address http://webdevgroup.orcmacro.com/gdoss/tool_redesign/evaluation/1.3.htm

SAMHSA/CSAP's PrevTech
Prevention Technology Platform

Project Setup | Training | Glossary | Library
Feedback | Help | Site Map | Search

Home Assessment Capacity Planning Implementation **Evaluation**

User:
Glen D.
[Logout](#) | [Profile](#)

[Reports](#)

Project:
DC Drunk Driving
Among Teenagers

Evaluation

1. **Evaluation design**

[View your Evaluation Report](#)

You're Here : Home >> Evaluation >> Evaluation Tool

Data Collection Instruments

[My Clipboard](#)

Add instruments to your assessment package.
Use the Measure and Instruments Repository to add instruments to your transfer cart. You will then be able to select an instrument for each observation.

[Add Instruments](#) 1


Transfer Cart contents: 2

- American Alcohol and Drug Survey (ADAS)
- CSAP GPRA Client Outcome Measures for Discretionary Programs - Youth Form (2002)

[Next >](#) 3

[Privacy Policy](#) | [Disclaimer](#) | [Link to Us](#)

Download a 508 accessible version of Adobe Acrobat Reader.

 U.S. DEPARTMENT OF HEALTH & HUMAN SERVICES
Substance Abuse & Mental Health Services Administration
Center for Substance Abuse Prevention

Done Internet

Page ID: 1.3
Page Title: Data Collection Instruments

Page Details

We will be adding some additional instructions and a link to a help/tutorial page that guides users through the process of using the M&IR and adding instruments.

1. Add Instruments will load the M&IR with the "Back to PrevTech" footer frame. The process of adding instruments to the Transfer Cart and bringing them back to the Evaluation tool will work the same way it currently does. However, the process is rather cumbersome and we will try to refine it in the future.

2. Instruments that are in the users Transfer Cart are displayed here. Removing instruments from the Transfer Cart is done through the M&IR.

3. Next takes the user to 1.3.1

Prevention Technology Platform (PrevTech) - Microsoft Internet Explorer

File Edit View Favorites Tools Help

Address http://webdevgroup.orcmacro.com/gdoss/tool_redesign/evaluation/1.3.1.htm?Submit=Next+%3E

SAMHSA/CSAP's PrevTech
Prevention Technology Platform

Project Setup | Training | Glossary | Library
Feedback | Help | Site Map | Search

Home Assessment Capacity Planning Implementation **Evaluation**

User: Glen D.
[Logout](#) | [Profile](#)

[Reports](#)

Project: DC Drunk Driving Among Teenagers

Evaluation

1. **Evaluation design**

[View your Evaluation Report](#)

You're Here : Home >> Evaluation >> Evaluation Tool

Link Instruments and Observations

[My Clipboard](#)

For each instrument, indicate where in your evaluation design you will use the instrument.

American Alcohol and Drug Survey (ADAS)				
Mrs. Smiths Class 1 (Intervention)	<input type="checkbox"/> Pre	<input type="checkbox"/> During	<input type="checkbox"/> Post	<input type="checkbox"/> Follow Up
Mrs. Smiths Class 2 (Control)	<input type="checkbox"/> Pre	<input type="checkbox"/> During	<input type="checkbox"/> Post	<input type="checkbox"/> Follow Up

CSAP GPRA Client Outcome Measures for Discretionary Programs - Youth Form (2002)				
Mrs. Smiths Class 1 (Intervention)	<input type="checkbox"/> Pre	<input type="checkbox"/> During	<input type="checkbox"/> Post	<input type="checkbox"/> Follow Up
Mrs. Smiths Class 2 (Control)	<input type="checkbox"/> Pre	<input type="checkbox"/> During	<input type="checkbox"/> Post	<input type="checkbox"/> Follow Up

1 **Transfer instrument(s) to Database Builder Demo.**
Use this option if you wish to send the selected instruments to your Database Builder account.
Instruments will be sent to <http://gemini.qrc.com/macro/csap/dbb/>.

[Transfer Instruments](#) 1

[Next >](#) 3

Done Internet

Page ID: 1.3.1
Page Title: Link Instruments and Observations

Page Details

If a user has not yet created an evaluation design this page would display only the following message "You must create an Evaluation Design before you can link instruments to observations".

1. This piece is dependent upon whether the user has a DBB account registered with PrevTech. If not, this piece will not be displayed.
2. This button will transfer the users instruments to their DBB account.
3. Next will take the user to 0